



Ronald McDonald
House Charities®
Northern NSW



Keeping families close™

Impact Report 2020



Contents



RMHC Northern NSW Board.....	4
Board Chair & CEO Message	5
About Us, Our Mission, Our Vision.....	6
How We Help.....	7
The Impact We Made in 2020.....	10
Financials	12
Our Locations.....	16
Our Community.....	17
Our Founding Mission Partner - McDonald's.....	20
Connecting through COVID	24
Fundraising Highlights	28
Thanks to Our Supporters.....	30

STORIES FROM RMHC NORTHERN NSW

Divine Timing.....	9
A Safe Place to Rest	15
Keeping RMHC Northern NSW Going	19
The Small Things in Life	23
Strength to Strength.....	27



Judith Woloschyn
Chair



Ross Bingham
CEO



Scott Green
Treasurer



Lauren Cruz



Ty Brennock



Alan Gilmore



Jacqueline Jones



Stewart Leeman



Edwin 'Ted' Lewis



Meg McNaughton



Jason Simpson



Craig Wellings



Andrew White



Philip Wilson



Board Chair and CEO Message

Ronald McDonald House sees families when they are going through some of their most difficult days, and 2020 was no exception. The added challenges COVID-19 brought were really felt by all, but our mission remained – to support the ever-changing needs of seriously ill children and their families.

We are, as always, thankful for the ongoing support of our determined community of sponsors and our founding mission partner McDonald's. Our wonderful volunteers and staff once more showed their dedication to helping families as they persevered through uncertain times, tenaciously employing ingenuity and adapting to a continually changing landscape. If it wasn't obvious before, 2020 truly did display just how vital everyone is in contributing to our cause.

While our family of 320 volunteers remained, the temporary closures and restrictions on Houses and Family Rooms sadly meant most could not help. This was a difficult transition to make for all, but their safety, and that of our families, was pivotal in how we could best support everyone. Thank you to the volunteers who were able to continue with us and for being ever-ready to provide a comforting smile and a welcoming space for our families

Forging ahead, our Learning Program went online with the 2020 students becoming the first group to pilot the online program to great success, ensuring the students who missed out on education due to illness did not have to

miss out on realising their full potential. Vital community fundraisers such as the Ride for Sick Kids and Raise Love Charity Ball were adapted and reinvented under COVID-19 guidelines. Local business and community members answered our calls for support and made us the recipient of their own fundraisers.

With you by our side we made dark days a little brighter, providing care, comfort, safety, and security along the way. We've provided our families spaces to laugh, cry, and provide much needed hugs, places to learn, rest, and play. Thanks to you we stayed focused on our mission, rose above the challenges of COVID-19, and managed our way through lockdowns and social distancing to ensure our families stayed close to their seriously ill child.

Through your giving, kindness and selfless thought, we have ensured our families always have what they need — each other. They are better together.

Judith Woloschyn
RMHC Northern NSW
Board Chair

Ross Bingham
RMHC Northern NSW
CEO

About Us

When a child is seriously ill, it can disrupt every aspect of family life – from school and work, to everyday moments like meal times, bath times, play times and quality time. This can have a devastating effect on the whole family. Ronald McDonald House Charities helps family life carry on while a child is undergoing treatment. Since 1981, we've helped thousands of Australian families through their most difficult times.

Our Mission

To support the ever-changing needs of seriously ill children and their families.

Our Vision

To achieve the best outcome for families by reducing the impact of their child's serious illness.



How We Help

We've developed a range of Programs to help families enjoy more everyday moments when they need it most.



2 Houses

Our Houses offer families a place to stay close to the hospital. They are especially helpful for families who have to travel far to receive treatment for their child. Each House's accommodation is equipped with everything families need to feel supported during their stay.



1 Family Retreat

Our Family Retreat gives families a chance to forget the stresses of hospital life. They're open to families with a seriously ill child, or those grieving the loss of a child.



Learning Program

Extended stays in hospital or receiving medical treatment means kids miss school. Our tailored one-to-one tuition helps kids catch up on school work so that they feel confident as they transition back to school.

Our Learning Program also offers professional development for educators. EDMed™ provides teachers with information about the potential impacts of a serious or chronic illness, as well as educational strategies to support the needs of these students impacted by a serious or chronic illness.



3 Family Rooms

Our Family Rooms are located inside the hospitals and close to the children's wards. They give families a chance to recharge after many stressful hours at their child's side. Each Family Room is equipped with areas to rest, eat, freshen up, play and relax.



Arabella's Family

Divine Timing

"We are blessed to be where we are. Ronald McDonald House really does support the needs of families, I think people understate just how important it is." Damien, Muswellbrook NSW.

For Damien and Leisa and their 8 children, home has always been wherever they are together. Traveling the world for work, the family were living in Cambodia, teaching, when the COVID-19 pandemic struck. Like many, they were faced with the unknown and made the hurried decision to uproot and return to Australian shores. They weren't to know at the time that this would be one of the most important decisions of their lives.

Not long after their return, 13 year old daughter Arabella began experiencing sudden and serious symptoms, needing emergency help immediately. Arabella was diagnosed with Type 1 Diabetes which led to a confusing and highly anxious time for the entire family.

On a learning curve to discover what this meant, how to manage it and how to remain

together, they were in for a challenging time. But for Damien and his family, they could also see what they had to be thankful for.

"The support of Ronald McDonald House made everything so easy for us," said Damien.

"Being able to get to the hospital quickly, having the kitchen, the Family Room, the playground for the kids, being able to talk to other parents and the volunteers...the whole set-up is fantastic."



THE IMPACT WE MADE IN 2020



Unique Families Supported

2,088

by RMHC NSW saving a total of **\$1,268,892** for families.



Ronald McDonald Family Rooms

1,532 families took a much needed break in one of our **3** Family Rooms, walking through our doors over **5,486** times. An average saving of **\$106** per family.



Ronald McDonald Houses

342 different families given a home away from home .

\$1,265 in net savings per family during an average House stay of **11** days (or **\$115** per night) on accommodation, parking, food, and laundry



Ronald McDonald Family Retreat

67 holidays provided for families at our Forster Retreat with an average savings of **\$3,000** per family.



Our Volunteers

Due to COVID-19 our **320** volunteers were unable to attend programs, however they all remained a part of our family and donated over **10,000** hours to help provide families with comfort and a sense of home.



Ronald McDonald Learning Program

98 students received tutoring through the Learning Program by one of our **37** tutors. Our Education Liaison Officer worked closely with the Paediatric Oncology team to support **49** students and their families on their journey to recovery from serious illness. This was a maximum savings for parents of **\$4,815**.



Financials

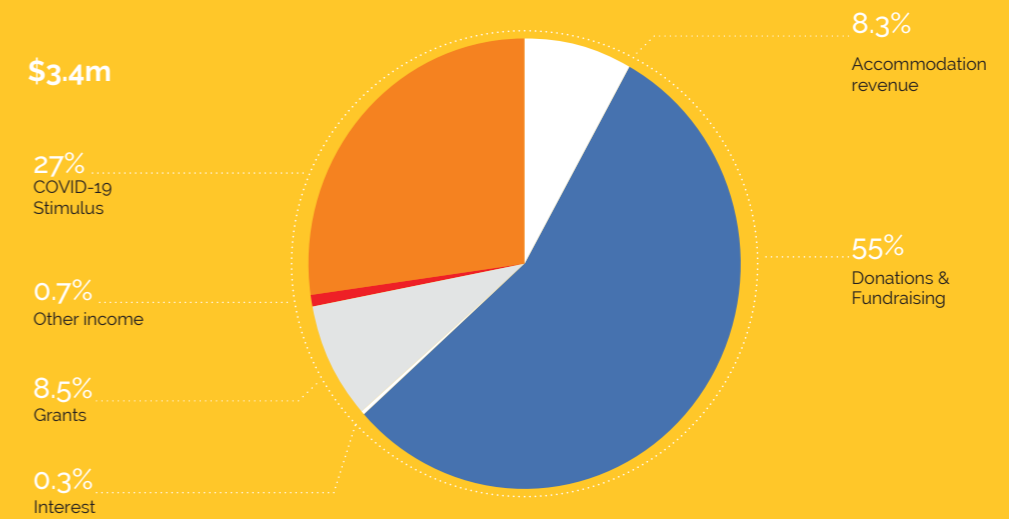
In 2020, RMHC Northern NSW generated over \$3 million to support the ever-changing needs of seriously ill children and their families. These vital funds have helped over 2,000 families from our region when they needed it most.

Our fundraising income saw \$1.9 million raised, even during the unprecedented times that the COVID-19 pandemic introduced at the start of the year.

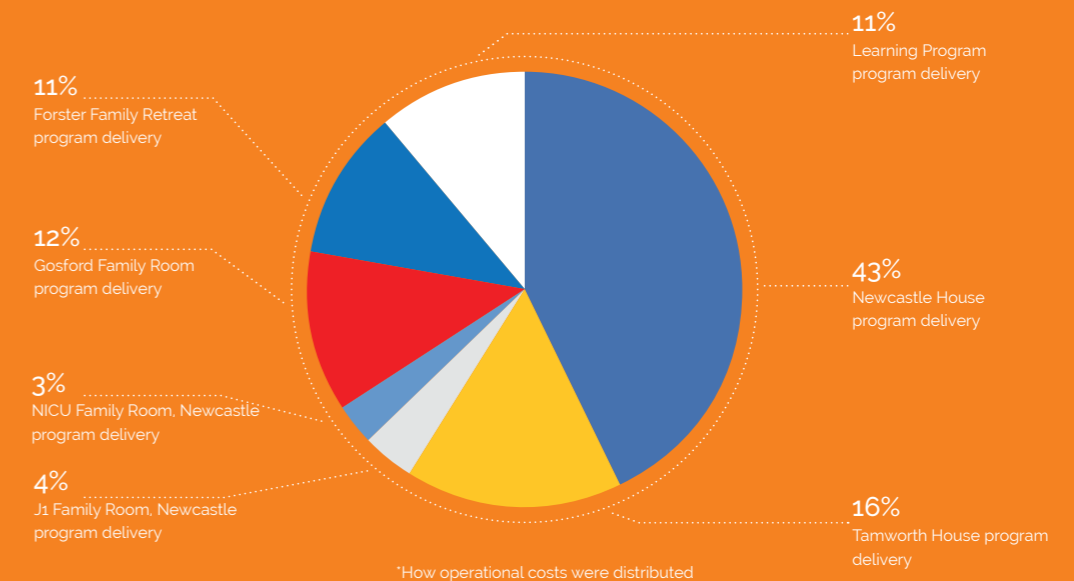
RMHC NNSW is 100% community owned and operated, so we rely on the generosity of the community to provide much needed support for sick children and their families. Although we saw a drop in donations and fundraising of 9%, it was encouraging to see such positive and continued support from the community and local businesses.

We are grateful to our generous supporters for enabling us to continue helping families of seriously ill children in 2020.

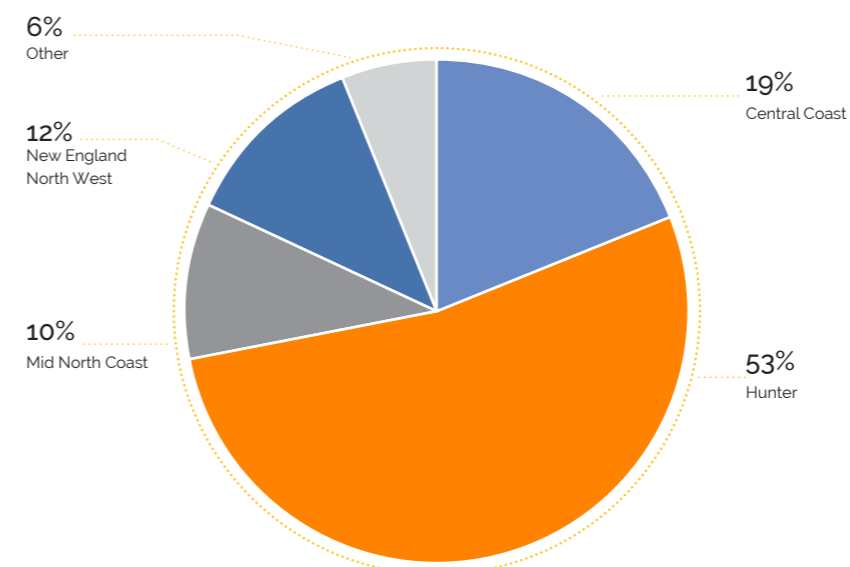
Where the money came from



Where the money helped*



Where our families came from





A Safe Place to Rest

"Thank you for making my children smile, thank you for making this the best week in forever. Thank you for helping my family relax for a change and enjoy life." Crystal, Metford NSW.

It's been a long road for Crystal's son Connah, who endured over 15 years of the unknown while specialists struggled to find an appropriate diagnosis for his rare condition.

Crystal and her family stood strongly together for so long without help, and were on a constant learning curve to assist Connah with his high needs. Non-verbal and requiring continual monitoring due to risks of choking and seizures, the anxiety of the everyday left everyone deflated and in need of respite.

"Having a safe place to rest without worry really helped us to find our ground again."

Crystal, Connah and their family were given the opportunity to take a break and reconnect at our Family Retreat in Forster. Overlooking the peaceful Wallis Lake, and just minutes

from the welcoming community of Forster, the Family Retreat offered Crystal and Connah's family the reprieve they desperately needed.

Spending their days together fishing, sight-seeing, meeting other families, and further cementing their bond, the Retreat offered a chance for the important smaller moments of family life to re-emerge.

"I truly can't thank you enough. Seeing my son interested in things and enjoying himself has been amazing. Thank you for your support!"





Our locations

Region	Location	Programs	Contact
New England North West	Tamworth Hospital	House	31 Dean St Tamworth NSW 2340 Locked Bag 9701 Tamworth NEMSC NSW 2348
Hunter	John Hunter Children's Hospital	House Family Room - J1 Family Room - NICU	Off Lookout Rd New Lambton Heights NSW 2305 PO Box 268 New Lambton NSW 2305
Central Coast	Gosford Hospital	Family Room	Holden St Gosford NSW 2250 PO Box 9530 Wyoming NSW 2250
Mid-North Coast	Forster	Family Retreat	Cnr Oyster and Dolphin Dve Forster NSW 2428 PO Box 9 Forster NSW 2428

Our Community



Due to the ongoing generosity of community, our families continued to feel safe and supported, despite changing and uncertain times. As Ronald McDonald House NNSW is 100% community owned and operated, it is with incredible gratitude that we were able to look after over 2,000 families when they needed it most in 2020.

Forster Bowling Club Annual Toy Raffle

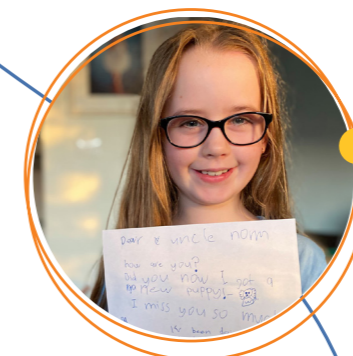
Ensuring a wonderful Christmas was had by all, Forster Bowling Club hosted their annual Toy Raffle in December, raising over \$2000 for our Forster Retreat. This went directly to helping keep families together over the festive season, by offering much needed rest and relaxation in the tranquil coastal getaway.

Christmas Gift Wrapping

'Twas the season for the Gosford Family Room's annual gift-wrapping stand thanks to a little ingenuity and some community Christmas spirit. Erina Fair provided the paper and doubled the space to ensure all were safe to wrap those presents and give generously to keep families together. 90 volunteers made up of individuals, businesses, and emergency services staff, joined the jolly workshop and raise \$10,000 over 14 days!

Jake's Car Wash

Jake's Car Detailing held a car wash to help seriously ill or injured children and their families stay together by raising \$5000 for Ronald McDonald House Tamworth. It was a great display of community support by Jake, his family, staff and wonderful volunteers.



The Great Kindness Challenge

In 2020 people were inspired to brighten someone's day through a small act of kindness. People like young Freya, who tried to find new ways to show kindness to those struggling amidst COVID-19. "I think if I'm kind to other people they will be kind to me or someone else and that makes me feel good, like when I get a big hug." Along with the Greater Bank, who matched donations up to the first \$3,000, Freya and many others raised over \$17,000 dollars to provide a home away from home for families in need.



Volunteers

Keeping RMHC NSW Going

The incredible contributions of volunteers makes Ronald McDonald House NSW what it is – warm, compassionate and a relief to vulnerable children and their families. During the onset of the COVID-19 pandemic our 320 volunteers remained, even when our Houses and Family Rooms needed to close either partially or entirely. While some volunteers continued to ensure everything kept running, others waited to return with gusto when it was safe to do so. We couldn't be more grateful for these wonderful people, their passion, and their dedication for helping seriously ill children and their families.

Carey Binks - Volunteering since 2017

While preparing a Meals from the Heart one night, Carey felt an immediate connection with the House. With his own children grown, and having retired from teaching, he saw Ronald McDonald House as an opportunity to remain of service to kids and their families.

"I talked to the volunteer that was on duty and thought, yeah, I could do this!"

The challenges of 2020 meant a lot of volunteers couldn't participate, however Carey was one of the few who remained.

"I was lucky. At 64 I was counted as one of the younger ones!"

Seeing a shift in how people interacted and used the space over this period was a little disheartening at times, but a lot still stayed the same.

"Families are still in crisis and their needs are still met by the House and those that keep it going. That's a wonderful thing. Everyone is so grateful, they think it's a brilliant place and you can only agree with them."

Vale Alan Gilmore

In 2020 we lost a dear friend, an incredible member of our Board, and an integral part of our RMHC NSW family.

Alan Gilmore and his late wife, Dele Gilmore, were pivotal founding members of the Newcastle House and staunch advocates for the needs of families with seriously ill children. With Dele's passing, Alan continued to dedicate his time to Ronald McDonald House until his final goodbye.

Alan was forever community focussed, giving, passionate, and kind. He wanted the

best for others, even in the midst of personal challenges and heartbreak.

Alan will be greatly missed by all at Ronald McDonald House Charities, Northern NSW, and we are eternally grateful for his lasting legacy.



McDonald's Our Founding Mission Partner

Founded in 1974, Ronald McDonald House Charities is a global charity established due to the request of an oncologist at the Children's Hospital of Philadelphia.

Dr Audrey Evans would see parents sleeping on the wards and in the hallways of the hospital, in order to stay by their children's side, and she envisioned a place where they could go. A place where they could live and rest while their child was undergoing treatment.

It was on St Patrick's Day that year that the Philadelphia Eagles joined up with their local McDonald's restaurants to raise money from sales to build a house for just that, and, in exchange for their total support, it was named the "Ronald McDonald House".

Australia was the second country to open a Ronald McDonald house in 1981 in Camperdown, NSW, also made possible due to the generous support of local McDonald's Restaurant Licensees.

It is because of the ongoing support of McDonald's Corporate, Licensees, and their customers, alongside RMHC's corporate partners and sponsors, that we are able to continue helping seriously ill children and their families across Australia.

McHappy Day

For RMHC McHappy Day is the biggest fundraiser of the year, and 2020 was no exception.

We received unbelievable support once more as individuals, businesses and every McDonald's restaurant around Australia got involved to donate to our cause.

Those who participated in 2020 raised a total of \$5m, which has made an incredible difference to the lives of thousands of children and their families.

McHappy Day never disappoints in bringing communities together, digging deep to help those when they need it most, and putting a smile on the faces of many.

In Northern NSW our incredible relationships with local restaurants and licensees is ongoing and we remain truly thankful for their vital and generous support through corporate volunteering, donations and workplace giving.



Supporting RMHC

We continue to be amazed by our local McDonald's, Licensees, and their crews, who are always up for getting involved when it comes to helping seriously ill children and their families.

Getting Involved

When an extra pair of hands are needed, the McDonald's crew are there to help. Whether it's hopping on a bike, or volunteering on the golf green or in a ballroom - their support helps ensure our fundraising events are a success.

Ride for Sick Kids

The McDonald's crew were there to support the road riders, who included Licensees, on the Ride for Sick Kids as they wound their way throughout the Hunter region. Making sure they were fed and warmly welcomed at each of their restaurants. They encouraged local community fundraising through in-store purchases of Helping Bikes which raised an incredible \$66,984—providing nearly 500 nights of accommodation for families.

Helping Hearts

The local crews and Licensees supported fundraising for our Helping Hearts Campaign by allowing their customers to purchase a Helping Heart in their restaurants. They displayed them proudly and made a big difference by raising over \$33,000 to keep families close.

Reaffirming the Mission

McDonald's Licensees throughout Northern NSW are some of our biggest supporters. Always looking to get involved and bringing their crews along with them. They took on physical challenges, volunteer roles, and sponsored events all in the name of staying true to the RMHC mission - to support the ever-changing needs of seriously ill children and their families.



The Small Things in Life

"The Family Room gave us the opportunity to de-stress and disengage from the reality of living life in a hospital. The volunteers were always happy, welcoming and ready to have a chat. Being in the Family Room felt like a little escape from our clinical surroundings." Kristie, Cooranbong, NSW

At five years old Kobe was a strong and healthy boy when he woke up one day suddenly paralysed.

Diagnosed with a rare condition affecting the spinal cord called Acute Flaccid Myelitis, Kobe would spend 12 months in the Paediatric Intensive Care Unit, as an inpatient, rebuilding his strength and relearning how to move and walk again.

During this highly challenging time Kobe's parents, Kristie and Michael, realised they needed to focus on the small things in life. Appreciating what they had previously taken for granted as they took turns to always be by Kobe's side.

"Showers became a major stress for us while Kobe was in the PICU," said Kristie.

"After a long, stressful and highly emotional day all we wanted was a nice hot shower. The Ronald McDonald Family Room was able to offer just that."

Giving Kristie and Michael a space to step off the ward, take time for themselves and know they were in a friendly and safe environment made all the difference to their days.

"Those 20 minutes a night quickly became something that we both looked forward to every day. One piece of advice I would tell others in a similar situation would be to take time out for yourself, even if it is only to have a hot shower."

Kobe has since been discharged and is continuing to work hard every day.

"It's a life-long condition, but he tries to participate in as many activities as he can. He's back at school, and loves playing with his friends."

Connecting through COVID

With the onset of COVID-19 we were all plunged into uncertain times that required constant consideration for how best to navigate daily operations. As people were encouraged to protect each other by physically distancing and self-isolating, we faced challenges to simply keep our Houses, Family Rooms and Family Retreat running. The global pandemic didn't stop children from becoming seriously ill or suffering injury, nor did their needs go away. Thankfully our caring local communities were aware of this and showed their support and kindness throughout the year.

The Greater Charitable Foundation

The dedicated team at the Greater Charitable Foundation offered immense comfort to seriously ill children and their families in 2020, with their generous funding helping to "keep the lights on" at our Ronald McDonald House, Newcastle. They donated over \$80,000 to support giving families a home away from home when they needed it most.

Their compassion for keeping families close as children receive vital treatment has never waned, and we are tremendously grateful for their invaluable partnership.

Port of Newcastle

The Port of Newcastle continued to support us in helping families, particularly over the festive season. They listed Ronald McDonald House NSW as one of their Employee Charities of Choice and donated over \$5,000. This covered 37 nights of accommodation to keep families close, showing that there is no greater gift than that of being with those you love.

The Kindness of Community

Gosford Family Room

The Gosford Family Room had to close for a period of time due to the restrictions COVID-19 brought for the hospital, our team, and volunteers. When we were able to reopen we needed to make purchases, such as individually wrapped items from food to cutlery, in order to meet new requirements.

A few community members were there to help us over the line. Robyn White, and her two friends Lauralee and Desiree, each made personal donations to the sum of \$500. Due to their kind donations and swift action the family room was stocked and ready upon reopening.

Forster Family Retreat

In Forster our Family Retreat was front and centre for local community groups and businesses. R&R Property opened their new branch and wasted no time in showing support for our families. They held a Community Giving Tree for which the Family Retreat was their charity of choice. Due to their generosity of spirit, families staying over the three weeks surrounding Christmas received gifts lovingly donated by the welcoming community of Forster.



Welcome New Sponsors

EISS Super

EISS Super came on board to generously sponsor the kitchens in our Newcastle and Gosford Family Rooms. With this sponsorship we were not only able to keep the kitchens going, but were also able to meet the added expenses that came with new health guidelines. The kitchens are incredibly important spaces as they provide families with a safe, welcoming, and quiet place for a cup of tea and a nourishing snack as they take a break from being on the wards. We know that parents value these little moments, and these were made possible because of the support of EISS Super.

Elisabeth Hodgson

The joy our families feel when their child is able to play with their siblings and meet other kids, just like them, is immeasurable. Elisabeth Hodgson generously sponsored the Newcastle House play room, and ensured that many joyous moments would continue, even in the uncertainty of 2020.

Port Waratah

Port Waratah Coal Service joined us in 2020, for a three-year partnership, by kindly signing up to sponsor the lounge area in our Newcastle J1 Family Room. When families step off the ward this lounge area offers a happy, supportive and relaxing space to disconnect, recharge and breathe. It is somewhere that families can have important conversations, allow their children to play, and check-in with our caring volunteers. It is because of the generous support of Port Waratah that we are able to continue to provide this safe space, and give families a sense of home when they need it most.

Avery Reconstruction & Aesthetic Plastic Surgery

Avery Reconstruction & Aesthetic Plastic Surgery became the sponsor of Room 5 at Newcastle House. With the onset of the global pandemic, physical distancing became even more vital for our families with a seriously ill child, and most chose to spend more time within their rooms. With this sponsorship we were able to continue offering this room as a cosy and safe home for families in 2020.



Strength to Strength

"It's just so wonderful that Ronald McDonald House Charities is there for families like mine. They've been there for Ben and our family for the longer term, and we are so grateful we were not forgotten." – Gillian, Windermere NSW.

In 2015 Ben was diagnosed with Severe Aplastic Anemia, bone marrow failure.

Spending 9 months in hospital undergoing treatment, Ben, an intelligent boy eager to learn, didn't quite need the Ronald McDonald Learning Program at this time. Between the hospital school program and the dedication of his parents, Ben managed to keep up with his classmates. However, the Learning Program remained on offer and Ben was able to opt to "save" the tutoring service for when he needed it the most.

In 2020 Ben was in his final year of high school and working towards his Higher School Certificate. Ronald McDonald House never forgot about him and was ready to offer any support he needed.

With COVID-19 restrictions cancelling face-to-face tutoring, Ben was placed in the Learning Program's pilot group of students for online learning, gaining access to some added support in Maths and English.

As it transpired the online education suited Ben and his family perfectly well. It meant they didn't have to commute, and that Ben had more tutors to choose from who were best suited to his needs.

Ben went from strength to strength during Year 12, becoming Student Leader for Environment and Sustainability, earning excellent marks in his exams, and receiving a Charlie Bell Scholarship for his tertiary studies.

Our local communities came out in force during 2020 to support Ronald McDonald House Northern NSW in any way they could. Their dedication and tenacity meant that events were still able to go ahead, even if they did look a little different to previous years. We were humbled by the amazing efforts of our teams, volunteers, and donors.



International Women's Day

Just before COVID-19 impacted events, our Forster Family Retreat held their annual International Women's Day luncheon hosted by the ever-supportive crew at Club Taree.

Celebrating the achievements of women in our community, the luncheon was not only a time to acknowledge the contributions women make, but also to raise funds for sick and injured children and their families.

Special guest speakers included Barbara Ryan, Chief Executive Officer Ronald McDonald House Charities, Deb Saunders, Contestant on The Block 2019 and Business Co-Owner of The Shed Luxe, and Kate Darnell, Founder of Gumboots by The Sea. Together the luncheon raised enough funds to cover 47 nights of accommodation for families.

Raise Love-a-thon

Alas, unlike Cinderella we did not get to go to the Ball. But we still managed to Raise Love!

As large gatherings were not allowed, RMHC Northern NSW reinvented the Ball and went digital with a Raise Love-a-thon which gave our wonderful communities even more time

to raise funds to give sick kids and their families a home away from home.

Over \$56,000 was raised which provided over 414 nights of accommodation.

Ride for Sick Kids

People were undeterred by the new restrictions placed on Ride for Sick Kids in 2020, adapting to the changes with understanding and enthusiasm.

Community members got involved to ride to and from work and school, and in gyms (adhering to COVID-19 safety measures), to raise much needed funds for Ronald McDonald House.

A team of dedicated riders, who would ordinarily ride from Grafton to Newcastle, stepped up to the new challenge of riding 500km in 5 days throughout the Hunter and Central Coast regions.

Combined, everyone involved raised over \$238,000, in an incredible effort to support seriously ill and injured kids and their families.

Our Supporters

RMHC Mission Partner



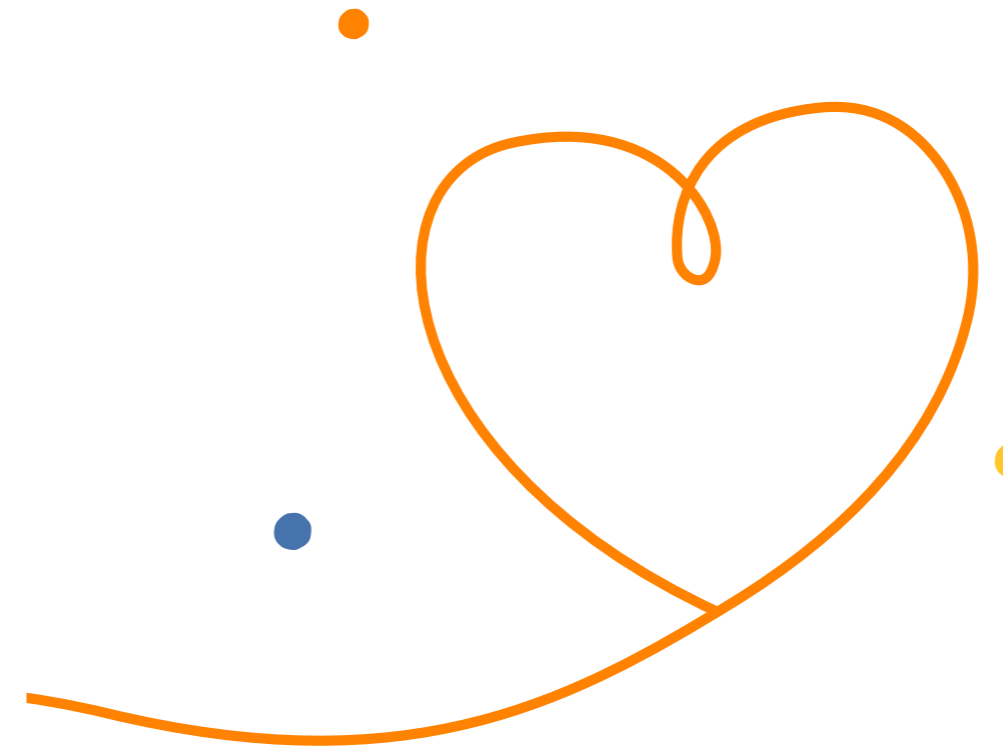
Thanks to our major donors

Active Accounting	EISS Super	NIB Foundation
Alan Gilmore	Elisabeth Hodgson	Northrop Consulting Engineers
Alliance Labour Solutions	Exquiria Pty Ltd	NSW Health Pathology
APG Workforce	Extend A Home Constructions	Pamarma Private Ancillary Fund
Aryzta	Family Chips Pty Ltd	Peter Spooner
Australia Wide Fire Suplies	First National Real Estate	Pettigrew Family Funerals
Avery Reconstruction & Aesthetic Plastic Surgery	Friends of Ronald McDonald House Godolphin	Port of Newcastle
Ben and Gloria Sharma Foundation	Greater Charitable Foundation	Port Waratah Coal Service
Beresfield Bowling Club	Halekulani Bowling Club	Prosperity Advisers Group
BHP Billiton Mount Arthur & Bayswater	Hayden and India Smith	Queens Wharf Hotel
Blackville Arts & Market Day	Hays Recruitment	Racing NSW
Breakers Country Club	Impact Building	Regional Australia Bank
Brendon Clarke	Ingenia Communities	Ripple Movement
Burke & Smyth Real Estate	Inghams	Rotary Club of Tamworth First Light
Central Coast Unity Bank	Jake's Car Detailing	Rotary Club of Terrigal
CFMEU Anvil Hill	Job Centre Australia	Rotary Club of Williamtown
CFMEU Bayswater	Lend Lease Property Management	Saronbell Pty Ltd
CFMEU Mt Owen	Erina Fair	Servers Australia
CFMEU Saxonvale	Lions Club of East Maitland	Shane Golding
CFMEU Mount Thorley Warkworth	Martin Brower Australia Pty Ltd	Spanish Cultural Association of Newcastle
Chris Watson Travel	Maureen Cooke	Strategic Information Technologies
Club Taree	McCloy Group	Suncorp GIO
Coles 208 Hunter Valley	McDonald's NNSW Licensees and McOpco	Telstra
Coles New England North West	Metroll Newcastle	Teys Tamworth
Collaborative Construction Solutions	Mid Coast Automotive Group	The Delany Hotel
Commonwealth Bank of Australia	Mike Blewitt Ford	The Pub Group
CWA Hospital Support Committee	Mine Super	Wyong RSL
Darrell Cox and Family	Muswellbrook RSL Sub Branch Club	
	Newcastle Hunter Transport Awareness Group	

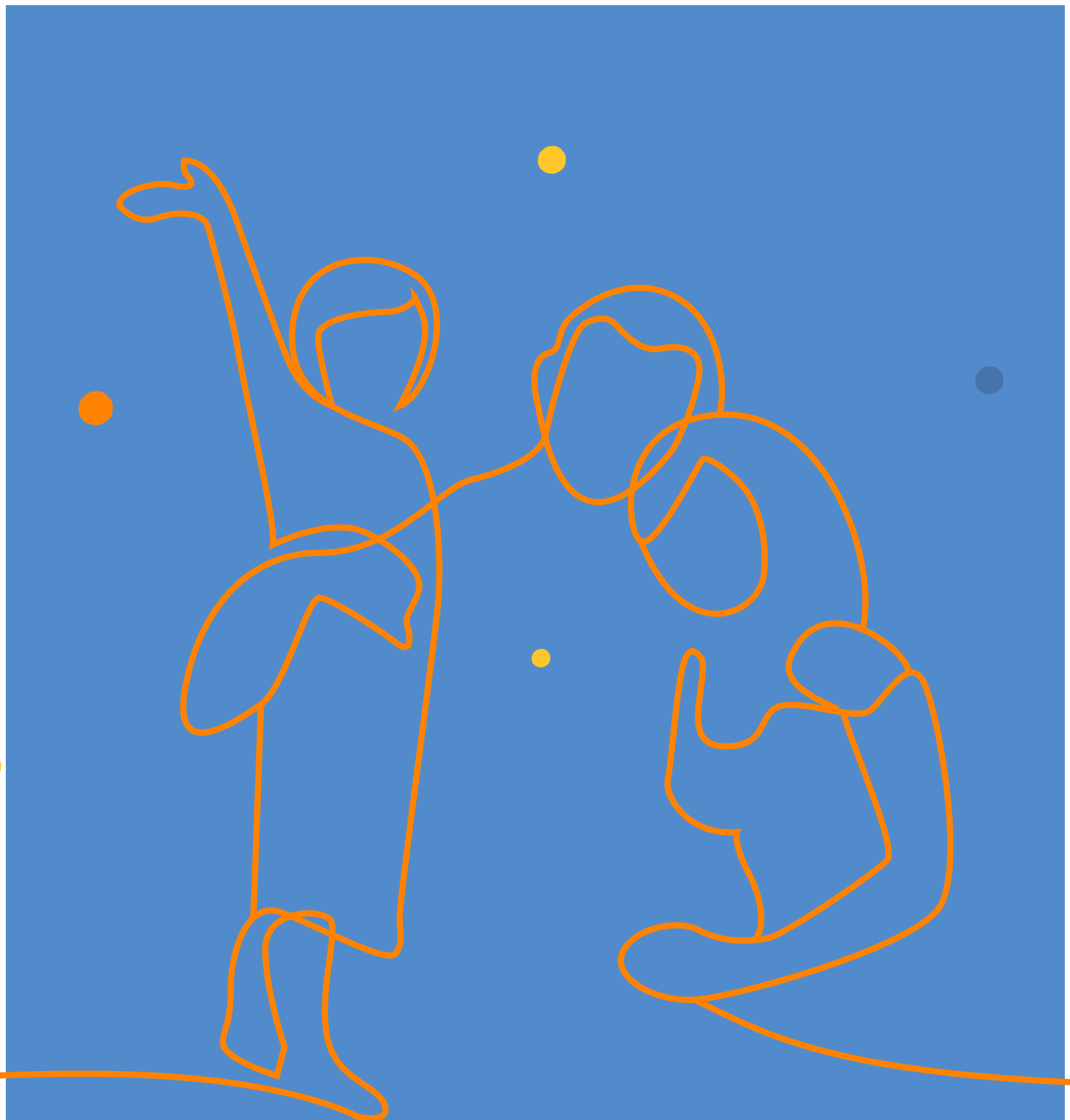
Thanks to our major in-kind supporters

AGL	Exquira Pty Ltd	Safe 'n' Sound Self Storage
Amart Furniture	Fresh Food	Savcorp Builders
Asaleo Care	Foxtel	Southern Cross Austereo
Bosch	Hyundai Help for Kids	Tip Top Bakeries
Bushells	Initial Australia	Toy Box
Clorox	La-Z-Boy	
Coca-Cola South Pacific Pty Limited	National Ceramics Industry Australia	
Ecolab	Popcake	

Thank You



This is the house
where families meet
to continue their lives,
to eat and sleep,
to find their strength,
and dry their tears,
to look forward with hope
to better years.
This is the house
that becomes their home.
This is the house
that love built.



#KeepingFamiliesClose

www.rmhc.org.au